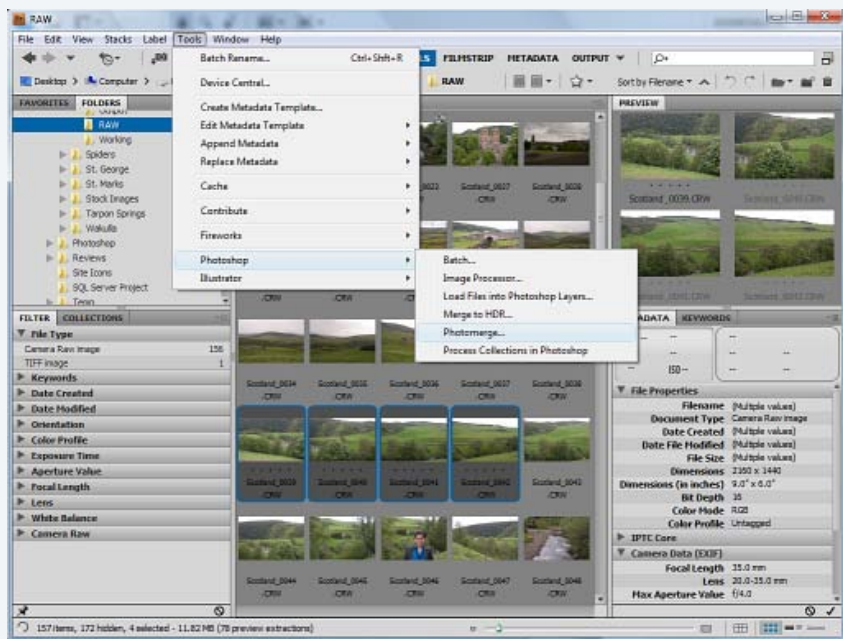


Panoramas are popular. It's common to use an extreme wide angle lens for panoramas. Sometimes even fisheye lenses are used.

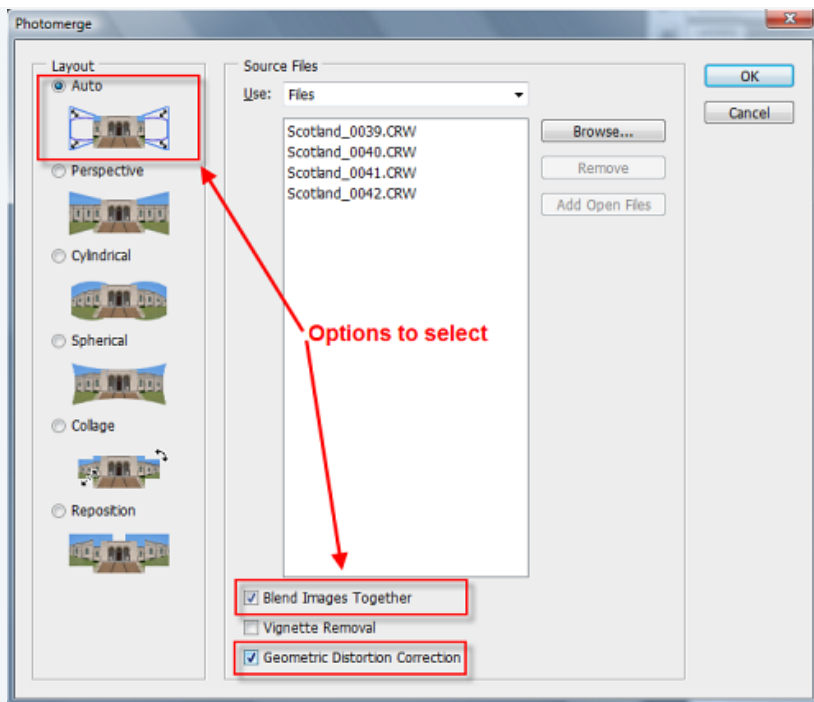
If you've ever used a fish eye or extreme wide angle lens, you know about distortions at the corners and along the edges. You can stitch your panoramas in Photoshop CS4 *and* correct for those lens distortions.

[To give credit where it's due, I saw this tip on Planet Photoshop. There were no screenshots, however, which could be confusing to users who are new to Photoshop CS4 and Bridge CS4. So I've added screenshots.]

To do this, you'll want to select your photographs in Adobe Bridge. Select the set you want to stitch together and then go to the Tools menu item and select Photoshop|Photomerge.



The Photomerge options you'll want to select are highlighted in the screenshot below. You want to select Auto Layout with the Blend Images Together and the Geometric Distortion Correction options.



The result will be a fisheye panorama without a fisheye look.

Author information

Author Bio:

Glenn Mitchell is an avid digital photographer, technical writer, and university administrator. He is an author with a long list of publications in trade magazines, peer-reviewed academic journals, and co-authored books. He is creative force behind The Light's Right. His photography can be seen at his gallery site: www.thelightsrightstudio.com.

Author: Glenn E. Mitchell II, Ph.D.

Technorati Tags: photoshop cs4 Adobe Bridge landscape photography panorama stitching

Digg

submit

Rating:



Average:

