

Using Camera Profiles With Lightroom 2

View Edit Track

Your *TLR Tip* has been created.

Submitted by **mitch** on Sat, 02/07/2009 - 18:31.



Matt Kloskowski posted a **video** on adding camera-specific profiles to Adobe Lightroom 2. The problem with videos is that it's hard to show someone where to go on the Web to obtain a resource.

I decided to write an illustrated tip to walk you through the steps and give you the URLs. Matt rushed through his video and left out some important details, too:

- The camera-specific profiles also work with Adobe Camera Raw (ACR)
- After installing the camera-specific files, your list of profiles can be littered with beta versions (I'll show you how to remove them).

Adobe has put together some camera-specific profiles. The profiles were offered as a response from photographers who like how the software from camera manufacturers renders the colors and tones in their RAW software but who like the convenience of Adobe Lightroom.

Installing the Camera Profiles

You need to go to the Adobe Labs site to download the camera-specific profiles. In Matt's video, he is able to click on the main page. Well, that no longer works. I won't promise these files will stay put forever, but the most reliable way to find them right now is to follow these steps:

1. Go to <http://www.adobelabs.com>
2. Click on the link to the **Adobe Photoshop Product Center**.
3. Select the link for **Camera Profiles and DNG Profile Editor**.
4. Select the link to download camera profiles.



Adobe Labs
 Adobe.com Home | Support | Developer Centers

Home | Technologies | Wiki | Downloads | Community | RSS Feeds | About Labs

Welcome, gmitchel | Your Account | Logout

Adobe Photoshop Product Center

The Adobe® Photoshop® family of products is the ultimate playground for bringing out the best in your digital images and transforming them into anything you can imagine. This page provides a summary of the Photoshop-related prerelease and experimental technologies available on Adobe Labs in addition to a listing of other Photoshop resources for designers and developers.

Labs Technologies

- Adobe Photoshop Camera Raw 5.3**
Gain access to the raw image formats produced by many leading digital cameras within Photoshop.
- Adobe Photoshop Lightroom® 2.3**
Manage and showcase all of your photographs while discovering the latest software tools for photographers.
- Adobe Pixel Bender™**
An image and video processing infrastructure for various hardware.
- Adobe Photoshop.com Mobile**
Easily upload, view, and share photos online.
- Configurator**
A utility that enables the easy creation of panels for Photoshop CS4.
- Camera Profiles and DNG Profile Editor**
A new color rendering package that contains the DNG 1.2 spec, camera profiles, and a utility to edit them.
- PatchPanel**

Technologies

- Alchemy
- Cocoon
- Configurator
- Durango
- Flash Catalyst
- Flash Player 10
- Flex Builder for Linux
- Gumbo
- InContext Editing
- JamJar
- Knowledge
- Mars Project
- Photoshop.com Mobile
- Pixel Bender
- Spy framework for Ajax
- Status
- Text Layout Framework
- XMP Library for ActionScript

Product Centers

- Adobe AIR
- Dreamweaver
- Flash
- Flex
- Photoshop
- Showcase Gallery

Requirements

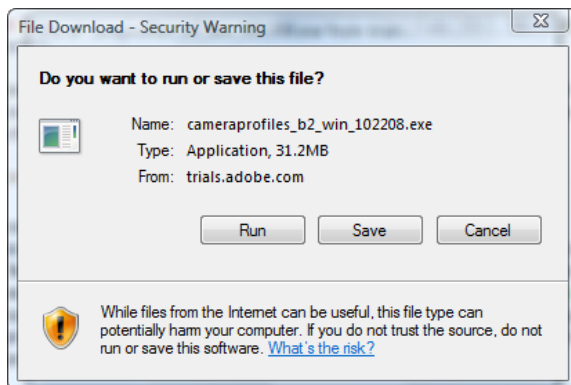
The new Adobe Standard and Camera Matching camera profiles require **Camera Raw 4.5 / Lightroom 2.0** or later. In general, they can be used in any raw converter that supports DNG 1.2. These camera profiles **will NOT work correctly** with earlier versions of Camera Raw (i.e., 4.1 and earlier) and Lightroom (i.e., LR 2 public beta, 1.4.1 and earlier). These earlier versions do not support DNG 1.2. **In particular, please note that the new profiles will NOT work correctly with the public beta of Lightroom 2. Only the release version of Lightroom 2 will load and process the new profiles properly.** The DNG Profile Editor's basic system requirements (i.e., CPU, operating system, and memory) are the same as Lightroom's requirements, [described here](#).

Finally, please note that these camera profiles **do not** apply to already-rendered images such as TIFF or JPEG files.

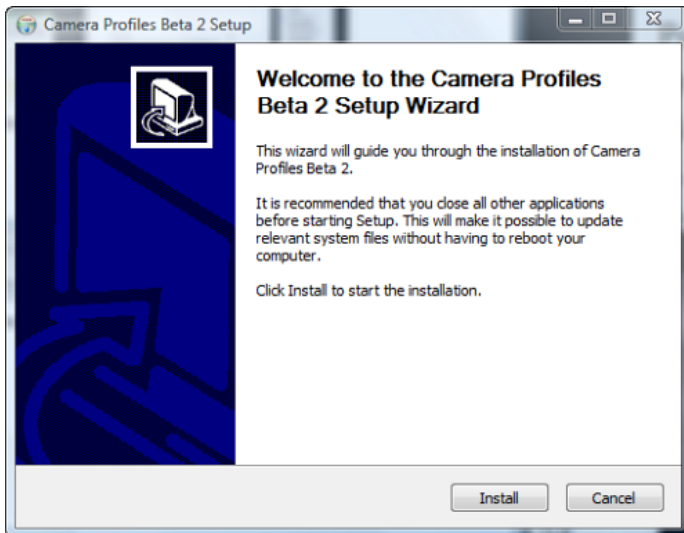
Downloads and Installation

- Download camera profiles beta 2 (updated October 22, 2008)
- Download DNG Profile Editor 1.0 beta 2 (updated October 22, 2008)

To install the profiles, first be sure to quit Photoshop and Lightroom. Then run the installer software and follow the on-screen instructions. Once the installer has successfully finished, you should be able to use the new profiles as described below in Getting Started. The DNG Profile Editor does not require installation. Simply unzip the zip file and run the software.



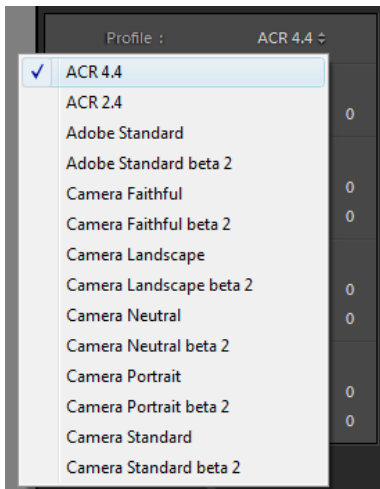
Once you have downloaded the setup utility, you need to run it. The setup utility will take care of installing the profiles in Lightroom. Make sure you exit Lightroom before you run the setup utility.



Using Camera-Specific Profiles

The new profiles show up on the Camera Calibration panel. The options you see will be specific to the photo that you're viewing in Lightroom Develop. Lightroom will read the metadata for the photo and load only appropriate profiles for you to select from. The examples you'll see here are for Canon DSLRs. Nikon .NEF files would have a different set of profiles, etc.

Camera-specific profiles only work with RAW files and with .DNG files.



You can try the different profiles. They will not change your Develop settings. What they do is change how the RAW file is rendered in Lightroom. In other words, they change your starting point for editing.

Below is an example of the ACR 4.4 profile followed by the Camera Landscape profile. You'll notice that the Camera Landscape profile has more saturated colors.

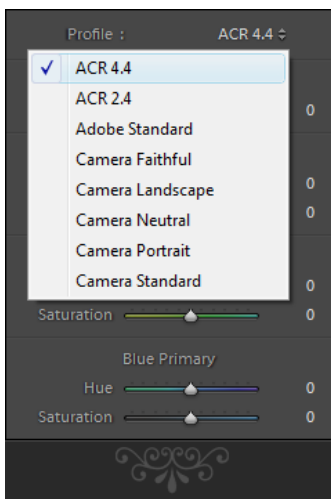
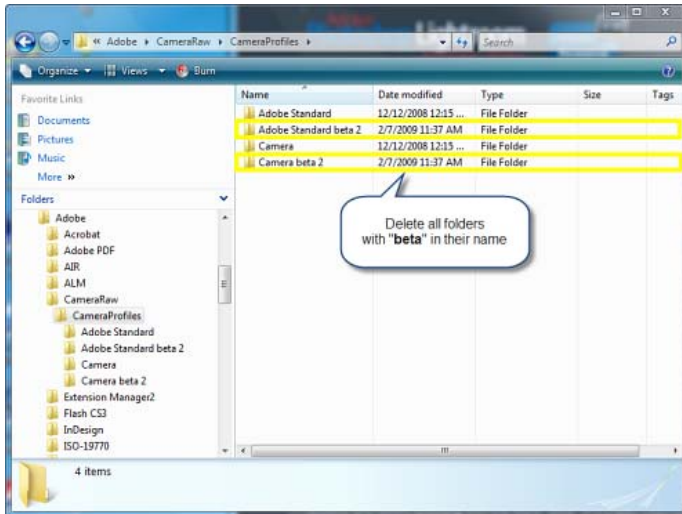


Removing Old Profiles

Depending on the version of Photoshop you're running and the version of camera profiles you're downloading, your choice of camera-specific profiles can be littered with beta versions. They hurt nothing, but they can get in the way and they certainly look untidy.

It's easy to get rid of them. Just go to proper Camera Profiles folder and delete any subfolder or file with "**beta**" in its name:

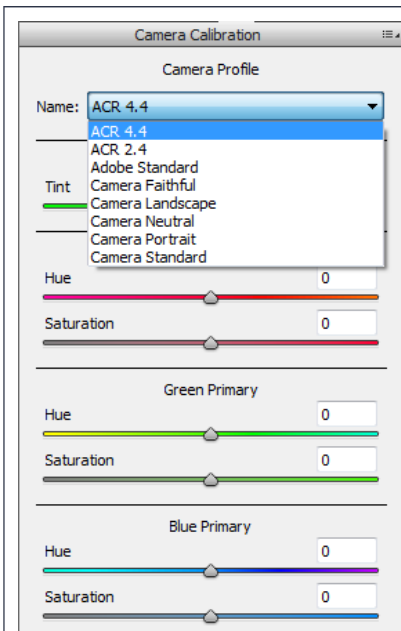
- **Mac:** /Library/Application Support/Adobe/CameraRaw/CameraProfiles
(go to the Library folder for Macintosh HD, not your user account)
- **On Windows 2000 / XP:** C:\Documents and Settings\All Users\Application Data\Adobe\CameraRaw\CameraProfiles
- **On Windows Vista:** C:\ProgramData\Adobe\CameraRaw\CameraProfiles



What About Adobe Camera Raw?

If you use Adobe Photoshop, you'll find that the camera-specific profiles work with ACR, too. The setup program will handle the installation for both Lightroom and ACR. Just be sure to close Photoshop and Adobe Bridge before you run the setup application.

You'll find the camera-specific profiles on the Camera Calibration tab.



Author information

Author Bio:

Glenn Mitchell is an avid digital photographer, technical writer, and university administrator. He is an author with a long list of publications in trade magazines, peer-reviewed academic journals, and co-authored books. He is creative force behind The Light's Right. His photography can be seen at his gallery site: www.thelightsrightstudio.com.